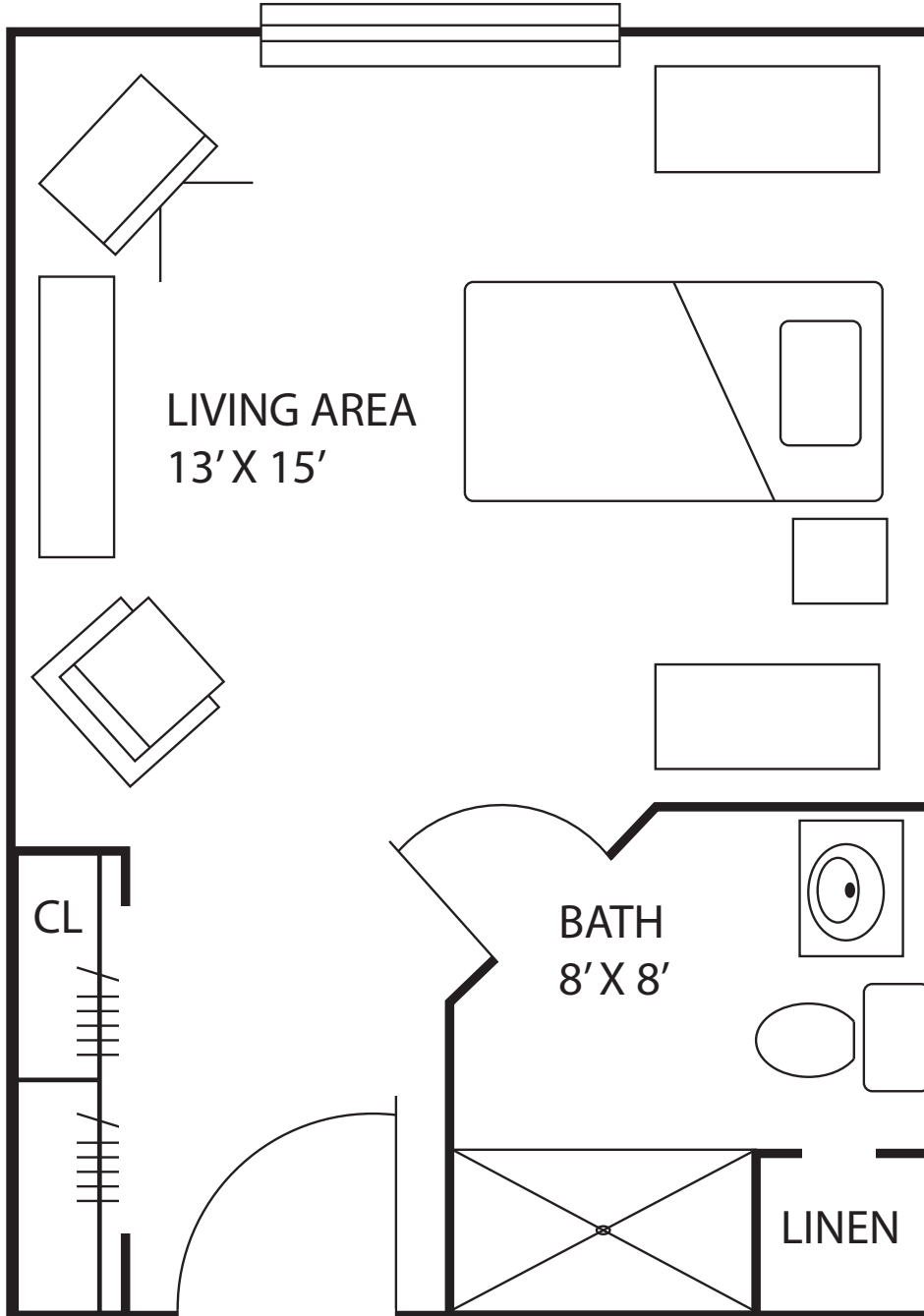




# PLEASANT VIEW RETIREMENT COMMUNITY

544 NORTH PENRYN ROAD, MANHEIM, PA 17545  
717-664-6237 | PLEASANTVIEWRC.ORG/PERSONAL-CARE



## STANDARD LIVING UNIT 265 SQ. FT.

(DRAWING NOT TO SCALE)